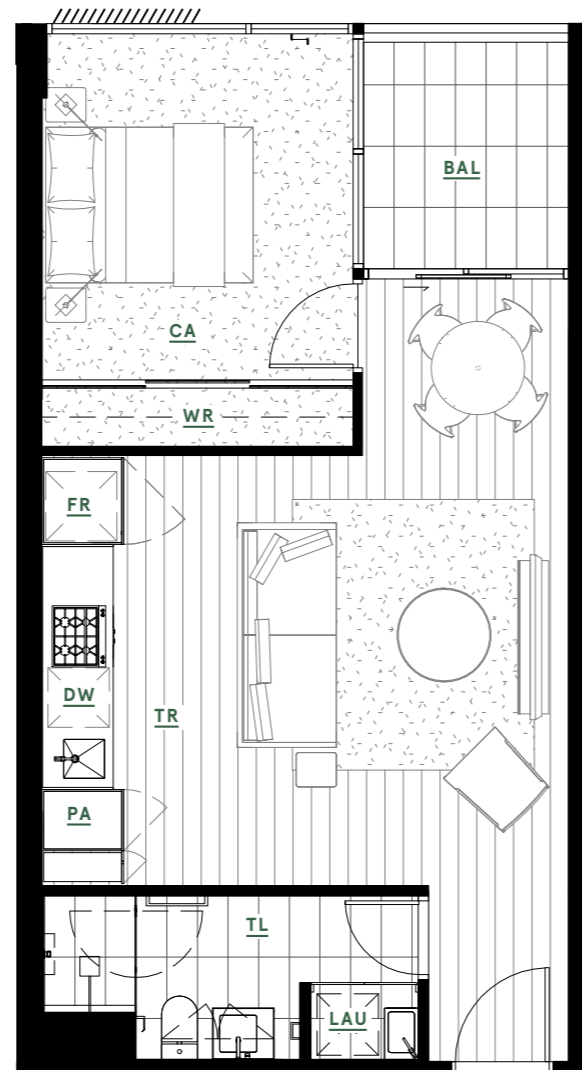


# RIVERBANK

THE PARKHOUSE



## KEY

<u>PA</u>	Pantry
<u>FR</u>	Fridge/Freezer
<u>DW</u>	Dishwasher
<u>WR</u>	Wardrobe
<u>LAU</u>	Laundry
<u>BAL</u>	Balcony
<u>TR</u>	Timber Floor
<u>TL</u>	Tile Floor
<u>CA</u>	Carpet



## APARTMENT TYPE

# A17

1 Bed, 1 Bath

## AREA

<b>Internal</b>	<b>50.5m<sup>2</sup></b>	<b>543.6ft<sup>2</sup></b>
<b>External</b>	<b>5.0m<sup>2</sup></b>	<b>53.8ft<sup>2</sup></b>
<b>Total</b>	<b>55.5m<sup>2</sup></b>	<b>597.4ft<sup>2</sup></b>

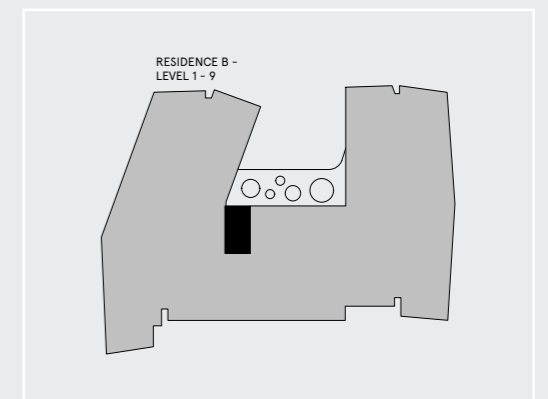
## APARTMENTS

B130, B231, B331, B431, B531, B631, B731, B830, B930

## RESIDENCE



## LEVELS



Disclaimer: All images, design features, views, photographs, diagram's and artist's impressions are for presentation purposes and are indicative only. Dimensions, areas, fittings and specifications are indicative and subject to change without notice. All internal/external furniture (including study desks and planter boxes) and whitegoods are not included in the price. Purchaser should check the plans and specifications in the terms of the contract of sale carefully prior to signing the contract.